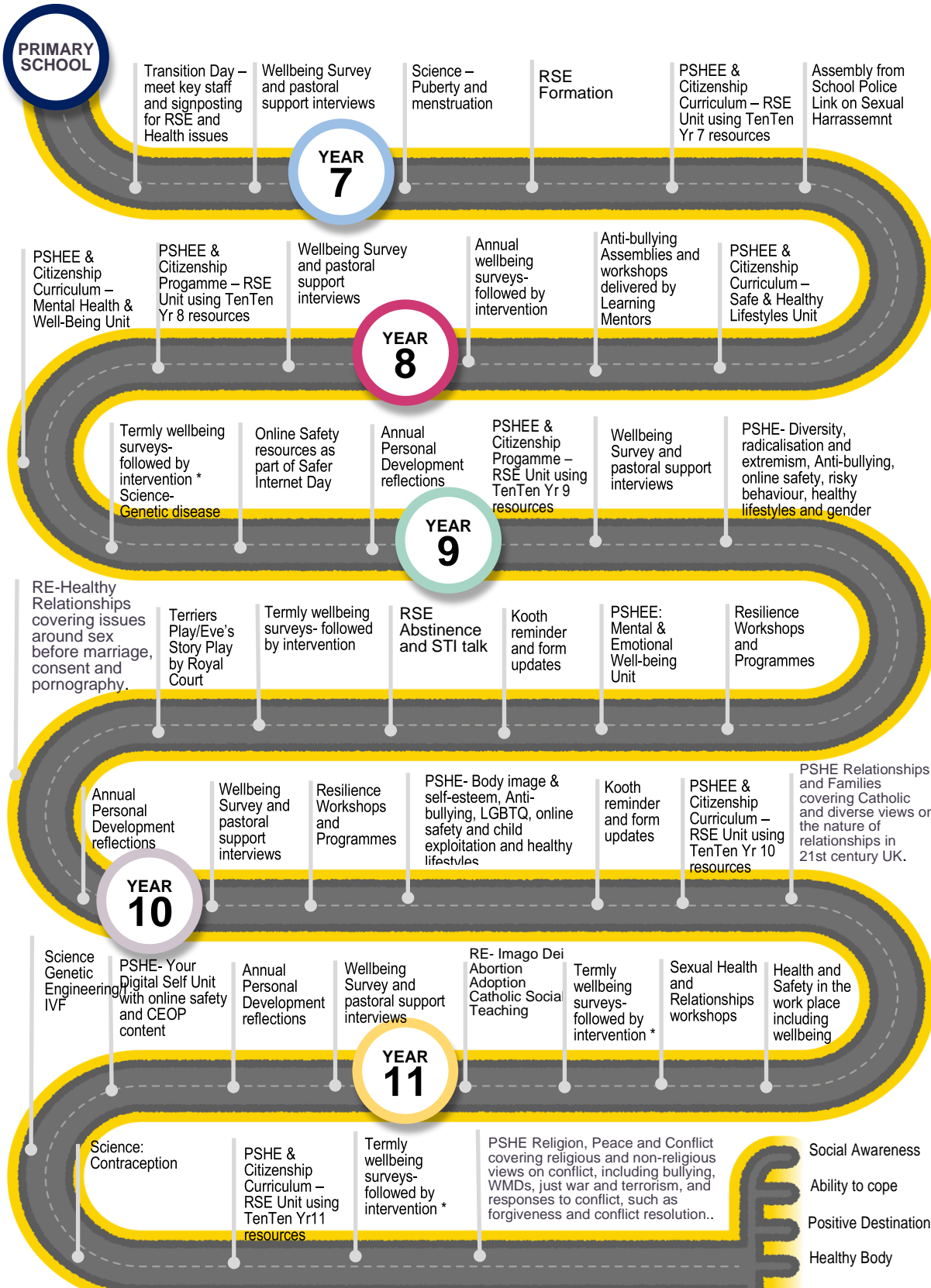




# RELATIONSHIP, SEX & HEALTH EDUCATION MAP



## KEY STAFF

- Curriculum Leader of PSHE & Citizenship.
- Curriculum Leader of RE & Catholic Life
- Progress Leaders & Assistants PLs
- SENDCO and Team (Learning Support)
- Form Tutors
- 3 Learning Mentors (referrals and drop in)
- RESET Manager
- School Chaplain and Chaplaincy Captains
- School Nurse (referrals and drop in)
- 4 DSLs 4 associate DSL
- School Counsellor
- 2 Attendance officers
- Safer Schools Officer
- Outreach support from SMH Team
- Pupil Wellbeing Champions
- Anti-bullying ambassadors
- School Council

## EXTERNAL PARTNERS & PROVIDERS

- TenTen Education
- Merseyside Police
- Venus
- YPAS
- Sexual Health and Relationship specialists
- Everton in the Community
- LFC Foundation
- Liverpool Royal Court
- SMH Team
- NHS
- Liverpool Royal Court

\*Interventions includes action best to suit. Careers programme, referral to SENDCO, Learning mentors, Chaplain, Careers Advisor, school nurse, business mentoring or enrolled onto one of our partnership programmes which focus on mental health, wellbeing, resilience and are written to suit need. Partners who compliment the offer are below. Parent engagement forms an integral part to the process

- Social Awareness
- Ability to cope
- Positive Destination
- Healthy Body
- Healthy mind
- Mental and emotional Resilience
- Awareness of support access