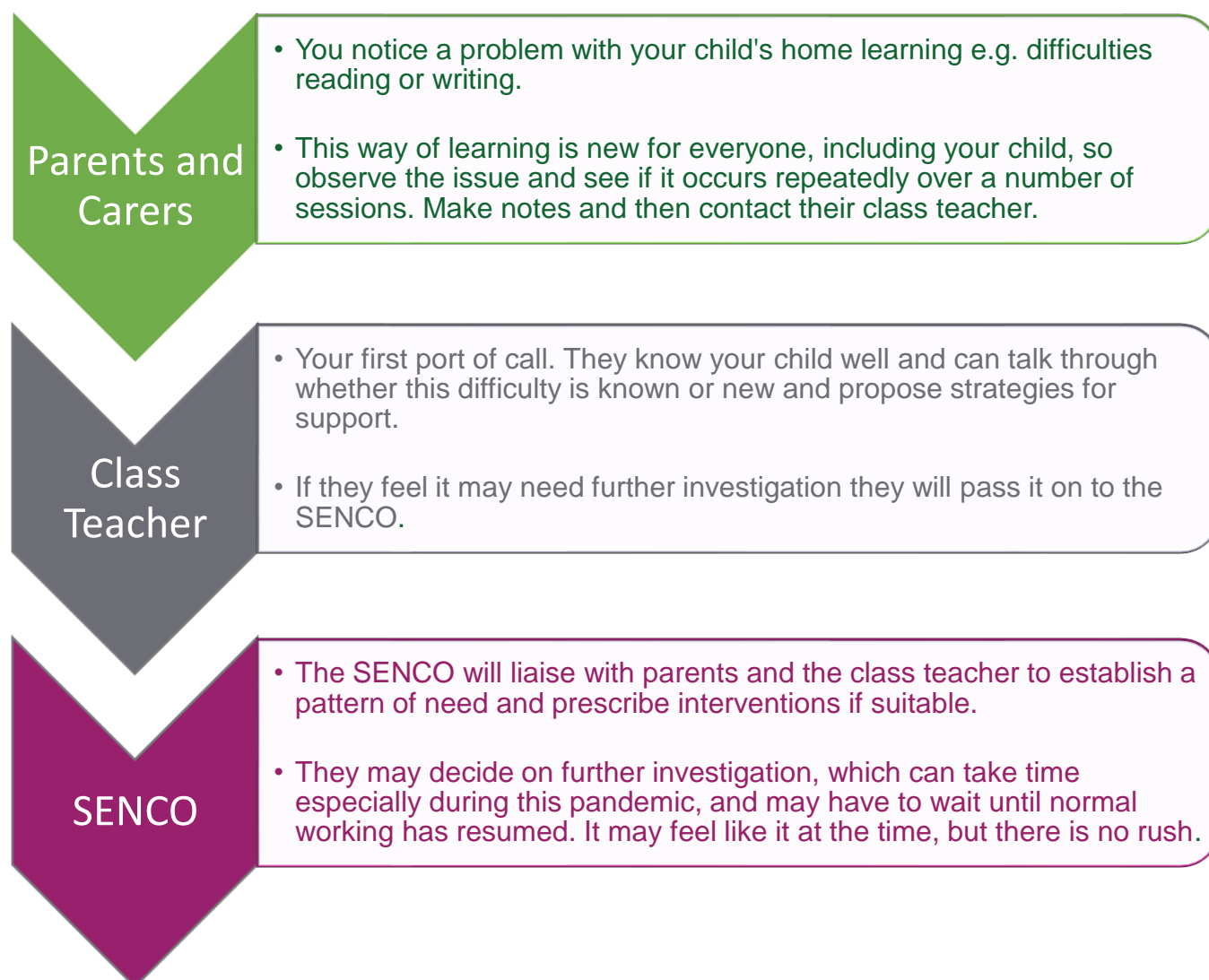


Parent Support for Home Learning

This current lockdown with schools closed to most pupils is a challenging time for everyone and we are aware that you are now feeling entirely responsible for your child's learning. We acknowledge that everyone's situation is different and that everyone is doing their best.

You are not alone, we are here to work in partnership with you. You are not **entirely** responsible for your child's education; we are here to work with you to ensure they are continuing to learn whilst at home. You may have seen more of your child's learning and observed their processing skills more closely than ever before and so may have become concerned about aspects that you feel you need to discuss. The diagram below gives you an idea of what to do.



Most of all, do not panic. Academic issues that arise can be worked on and addressed. Keep the dialogue between home and school going and together we can support our young people to be the best they can be.