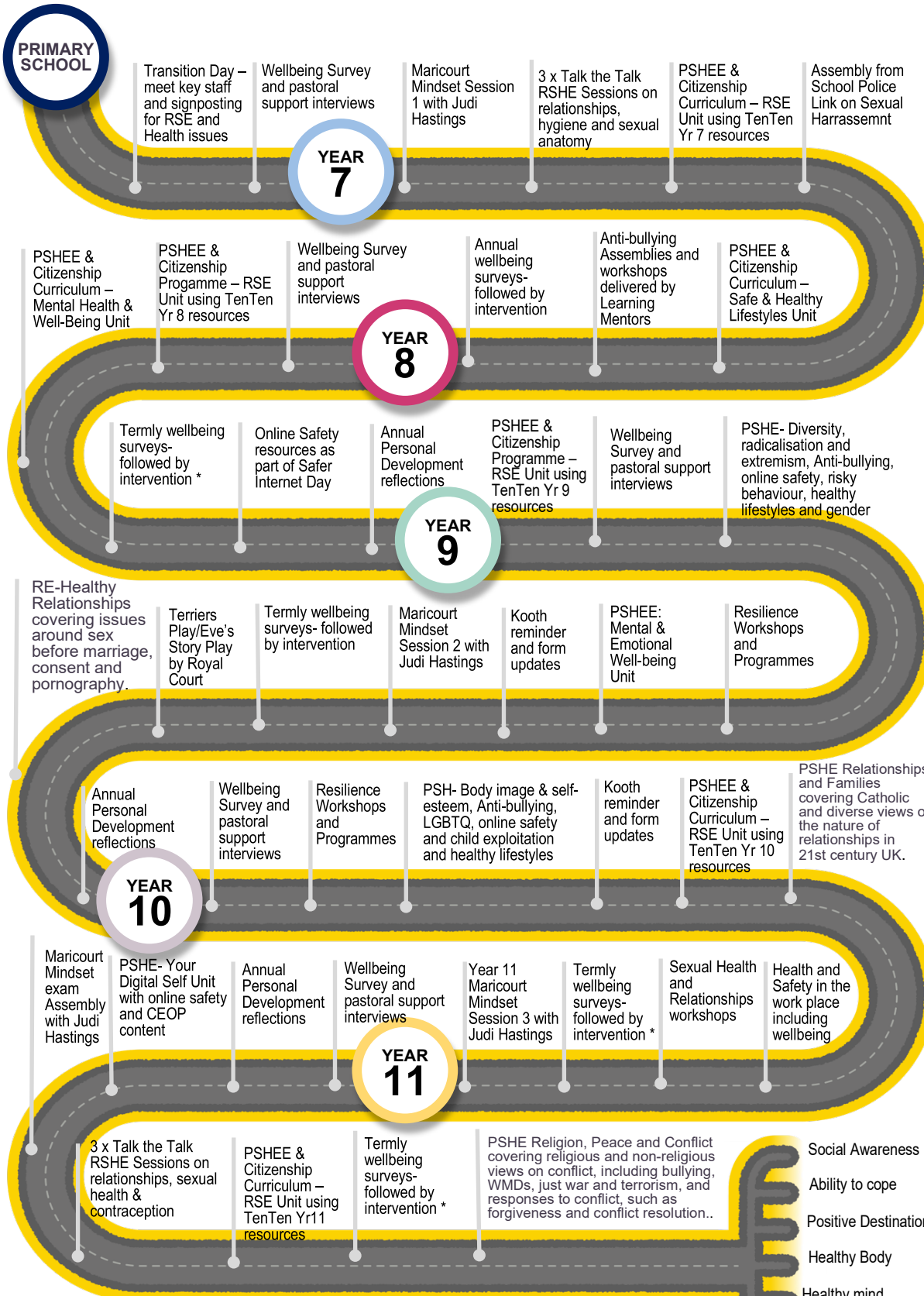




# RELATIONSHIP, SEX & HEALTH



- ### KEY STAFF
- PSHEE & Citizenship Curriculum Leader
  - RE Curriculum Leader
  - Progress Leaders
  - Assistant Progress Leaders
  - SENDCO
  - Form Tutors
  - 2 Learning Mentors (referrals and drop in)
  - School Chaplain
  - School Nurse (referrals and drop in)
  - Designated SLT Lead
  - 3 Safeguarding Leads 2 associate DSL
  - Outreach support from Sefton Mental Health Team
  - Well-Being Champions

- ### EXTERNAL PARTNERS & PROVIDERS
- TenTen Education
  - Talk the Talk Education
  - Merseyside Police
  - Radio City
  - Your Time 2 Change
  - Access 27
  - Everton in the Community
  - LFC Foundation
  - Liverpool Royal Court
  - Sefton Mental Health Team

\*Interventions includes action best to suit. Careers programme, referral to SENDco, Learning mentors, Chaplain, Careers Advisor, school nurse, business mentoring or enrolled onto one of our partnership programmes which focus on mental health, wellbeing, resilience and are written to suit need. Partners who compliment the offer are below. Parent engagement forms an integral part to the process

- Social Awareness
- Ability to cope
- Positive Destination
- Healthy Body
- Healthy mind
- Mental and emotional Resilience
- Awareness of support access